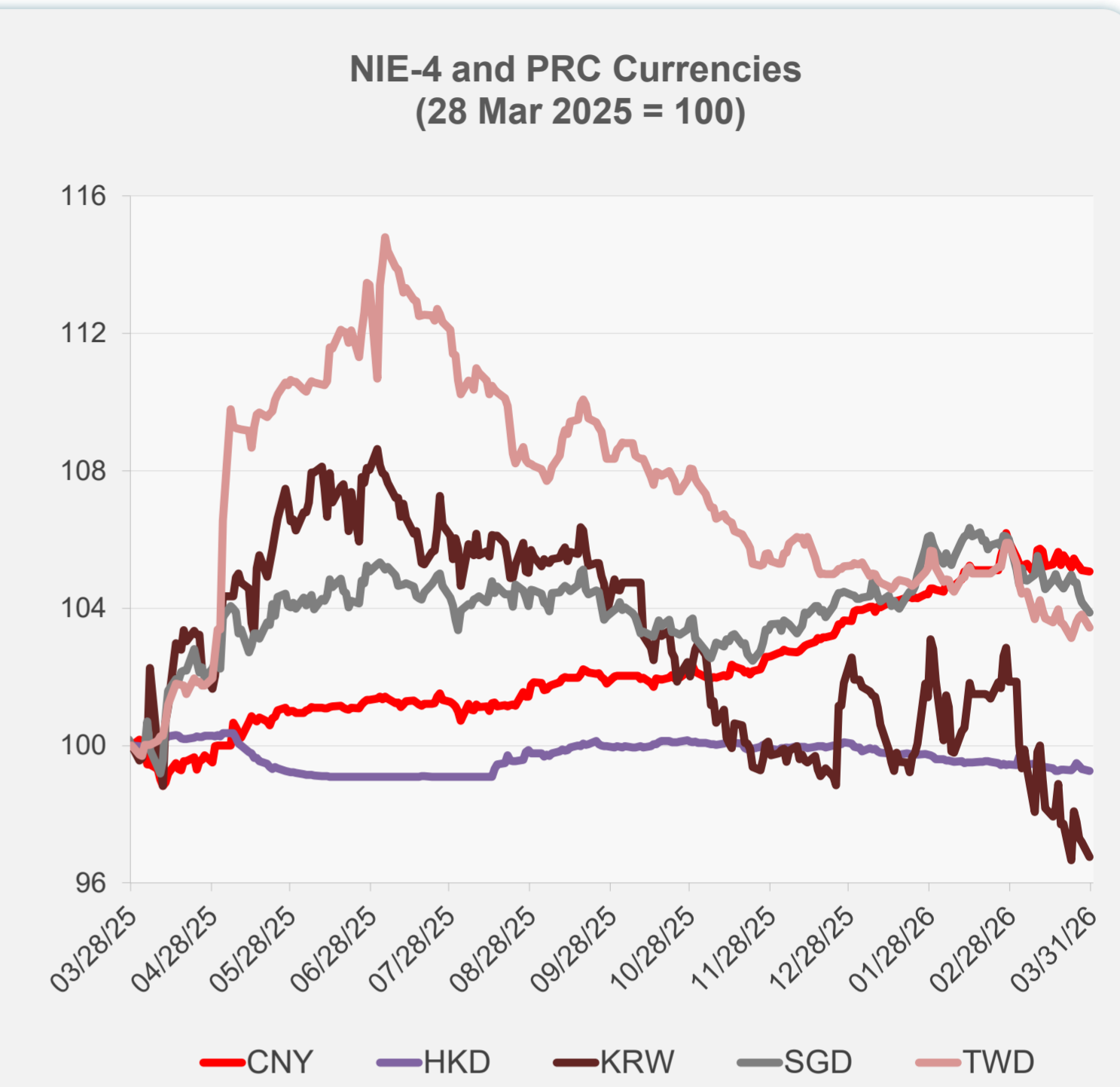
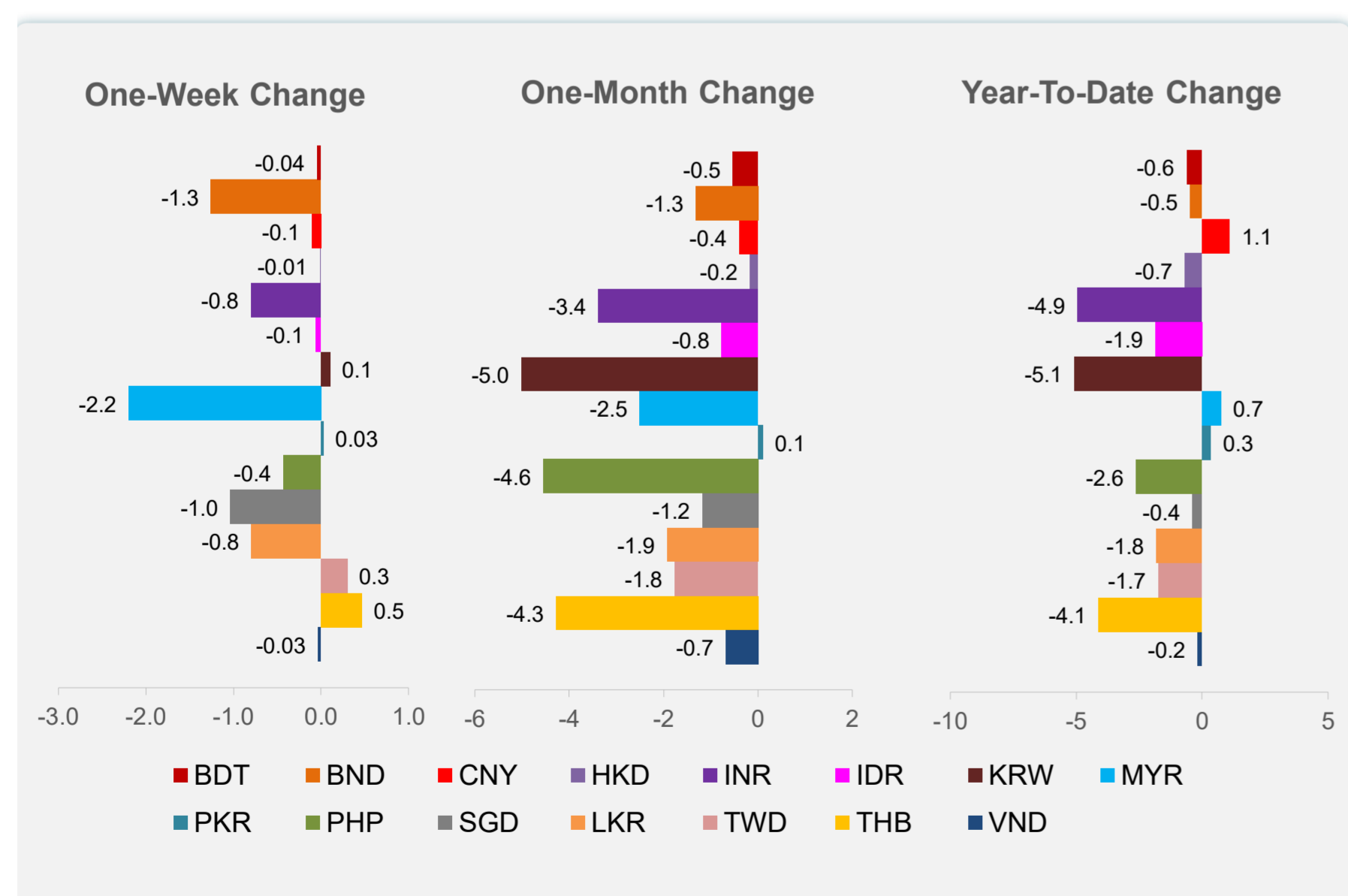
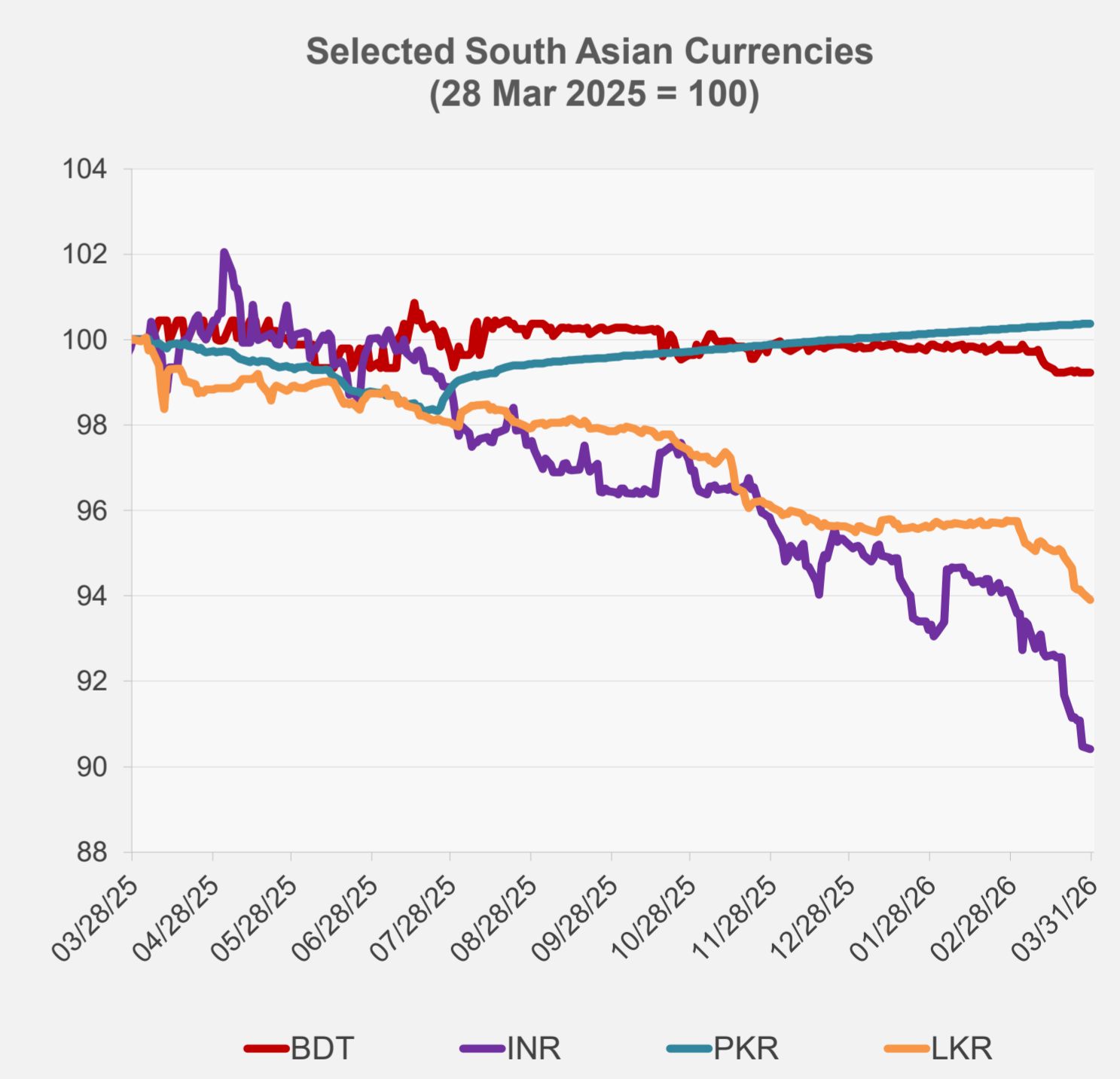
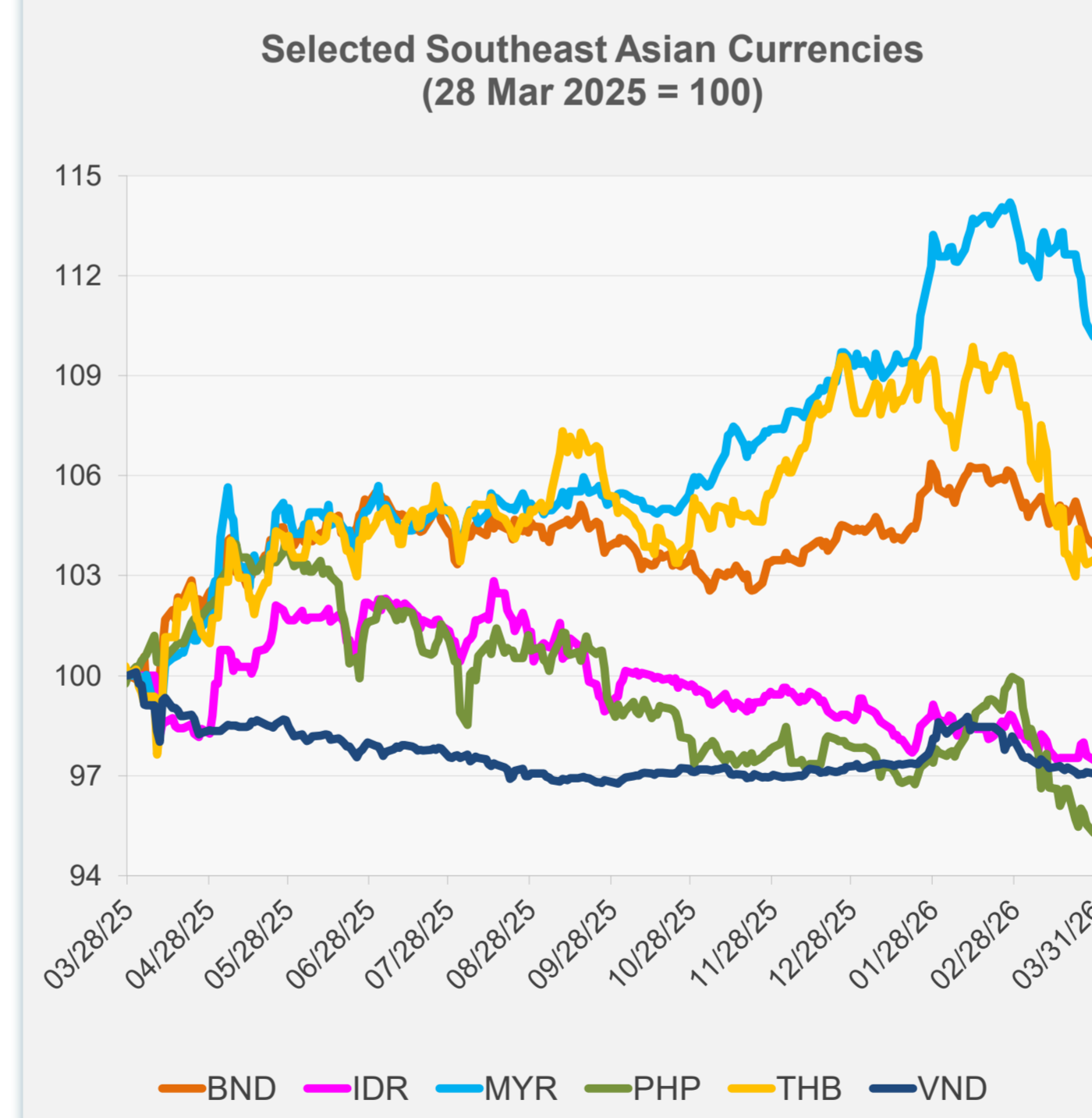


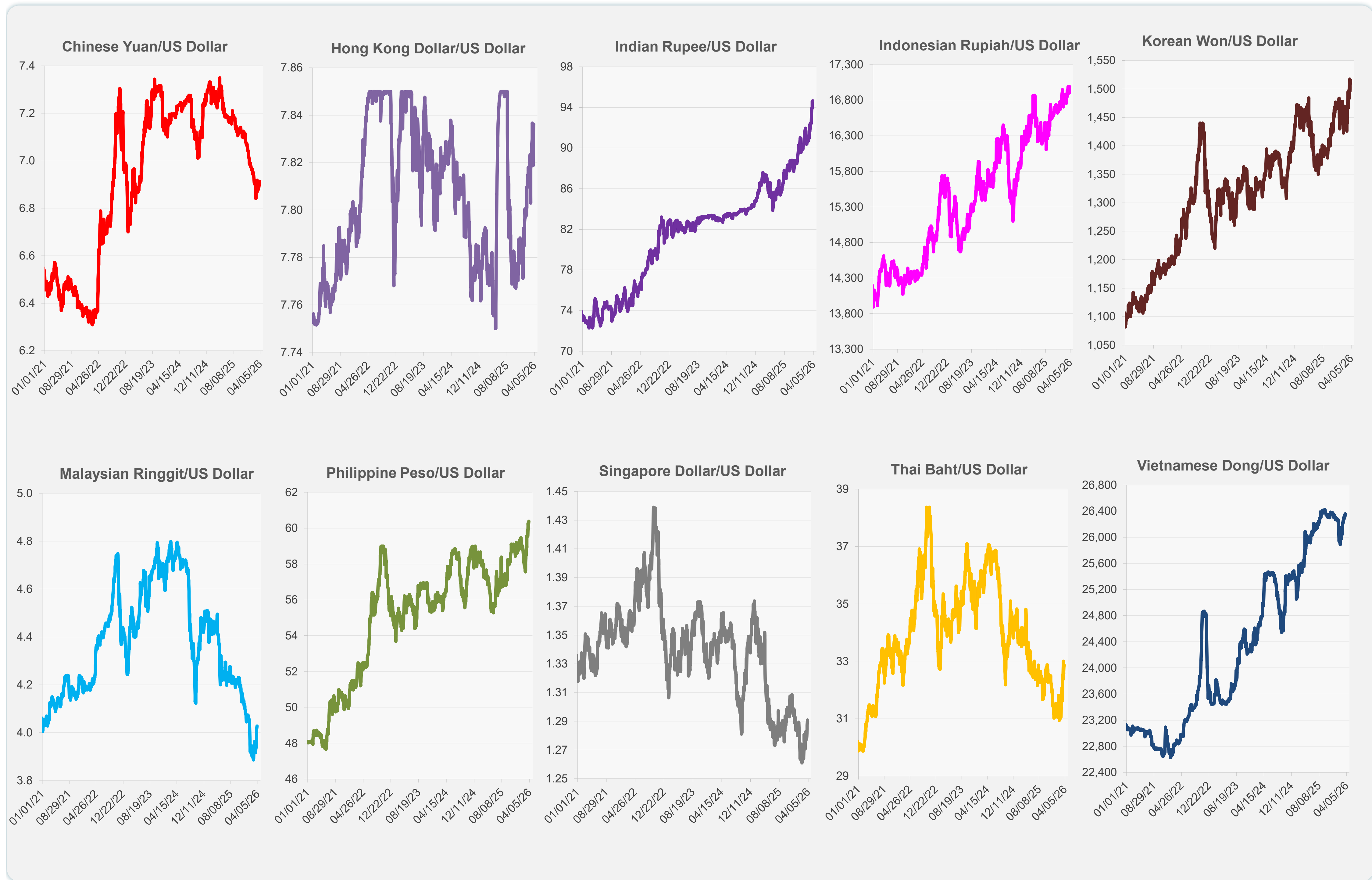
	Latest Closing	% change from Previous Day	% change from 01-Jan-26
Euro	0.87	-0.48	-2.38
Japanese yen (JPY)	159.78	0.11	-2.38
Bangladeshi taka (BDT)	123.00	0.00	-0.61
Brunei dollar (BND)	1.29	-0.24	-0.46
Chinese yuan (CNY)	6.91	-0.03	1.09
Hong Kong dollar (HKD)	7.84	-0.05	-0.67
Indian rupee (INR)	94.65	-0.06	-4.94
Indonesian rupiah (IDR)	16,990.00	-0.15	-1.85
Korean won (KRW)	1,515.70	-0.45	-5.06
Malaysian ringgit (MYR)	4.03	-0.37	0.74
Pakistan rupee (PKR)	279.15	0.00	0.34
Philippine peso (PHP)	60.39	-0.28	-2.62
Singapore dollar (SGD)	1.29	-0.28	-0.37
Sri Lanka rupee (LKR)	315.30	-0.17	-1.81
Taipei,China NT dollar (TWD)	32.00	-0.36	-1.74
Thai baht (THB)	32.85	0.11	-4.10
Vietnamese dong (VND)	26,344.00	-0.03	-0.17



NIE = Newly Industrialized Economies



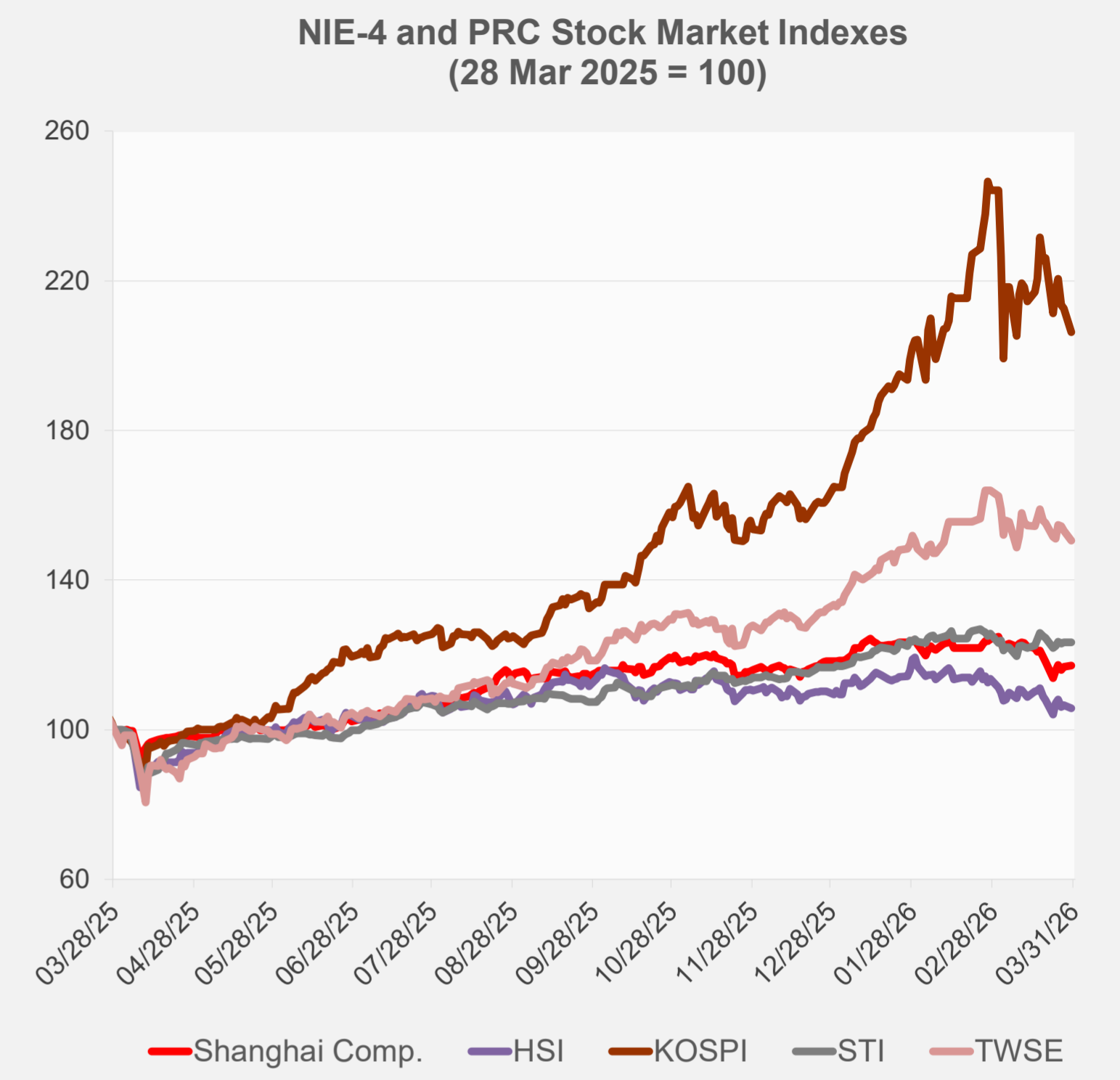
Note: Negative/Decreasing values indicate depreciation of local currency, and positive/increasing values indicate appreciation.
Source: ADB calculations using data from Bloomberg and Haver Analytics.



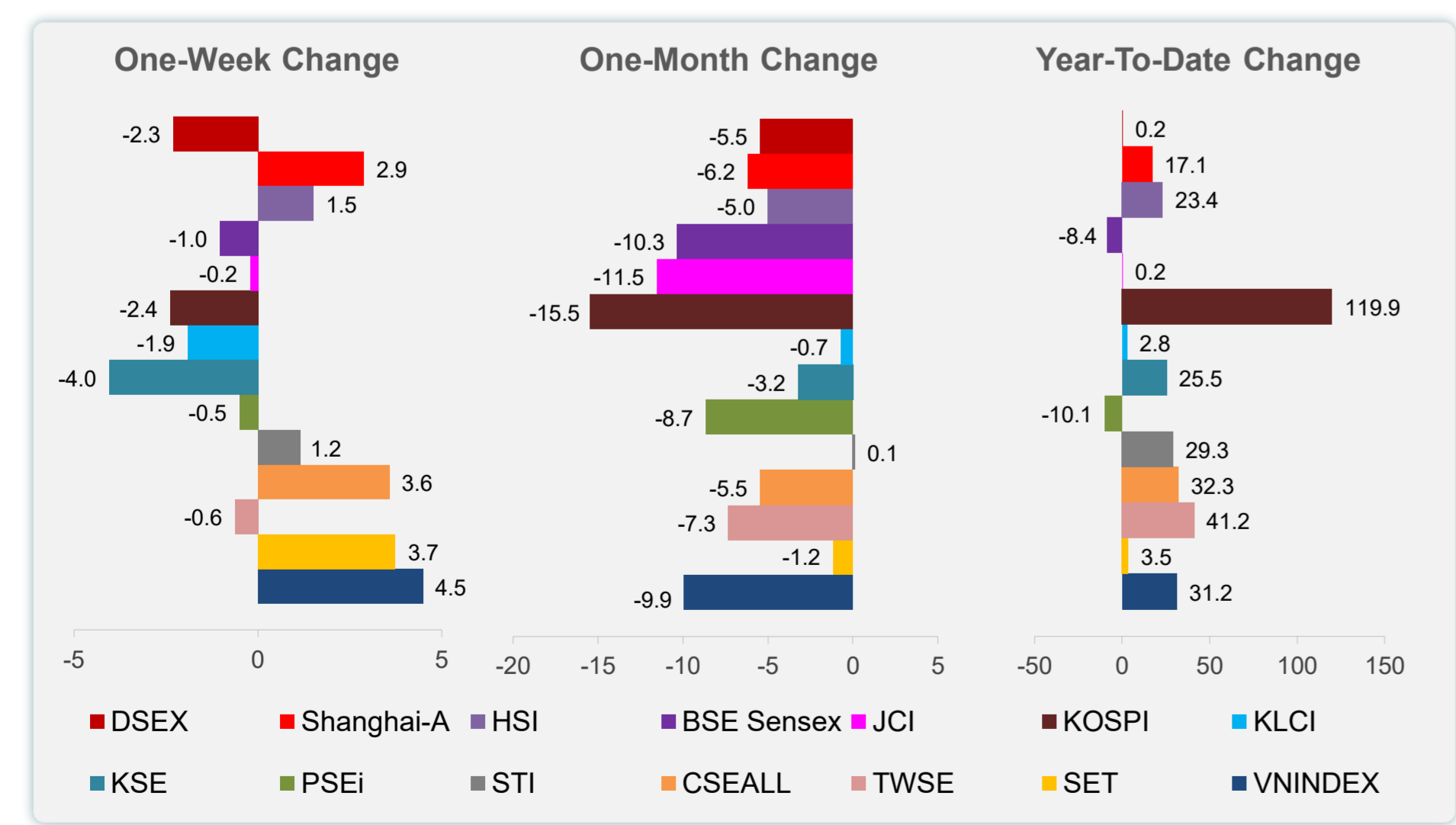
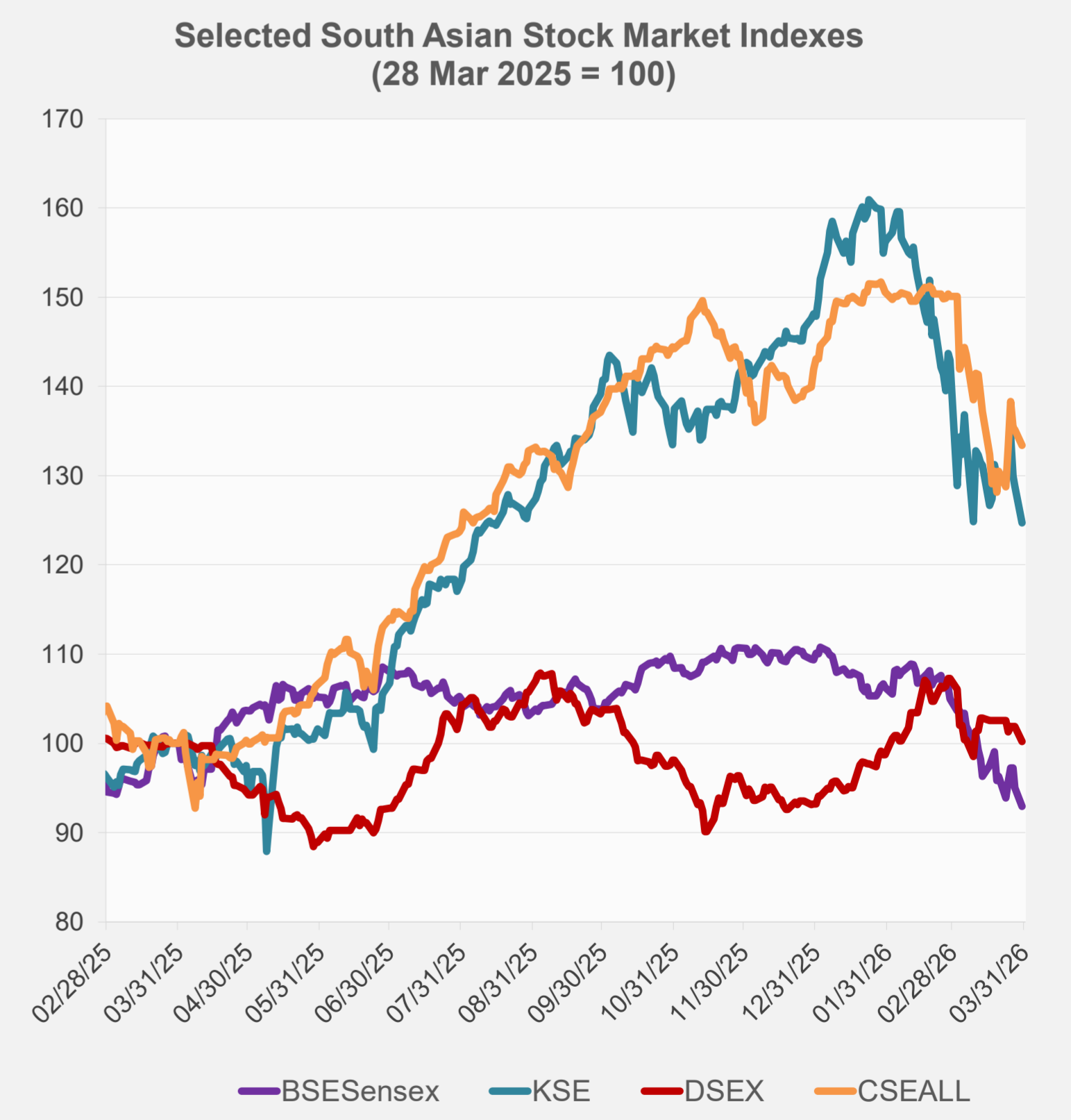
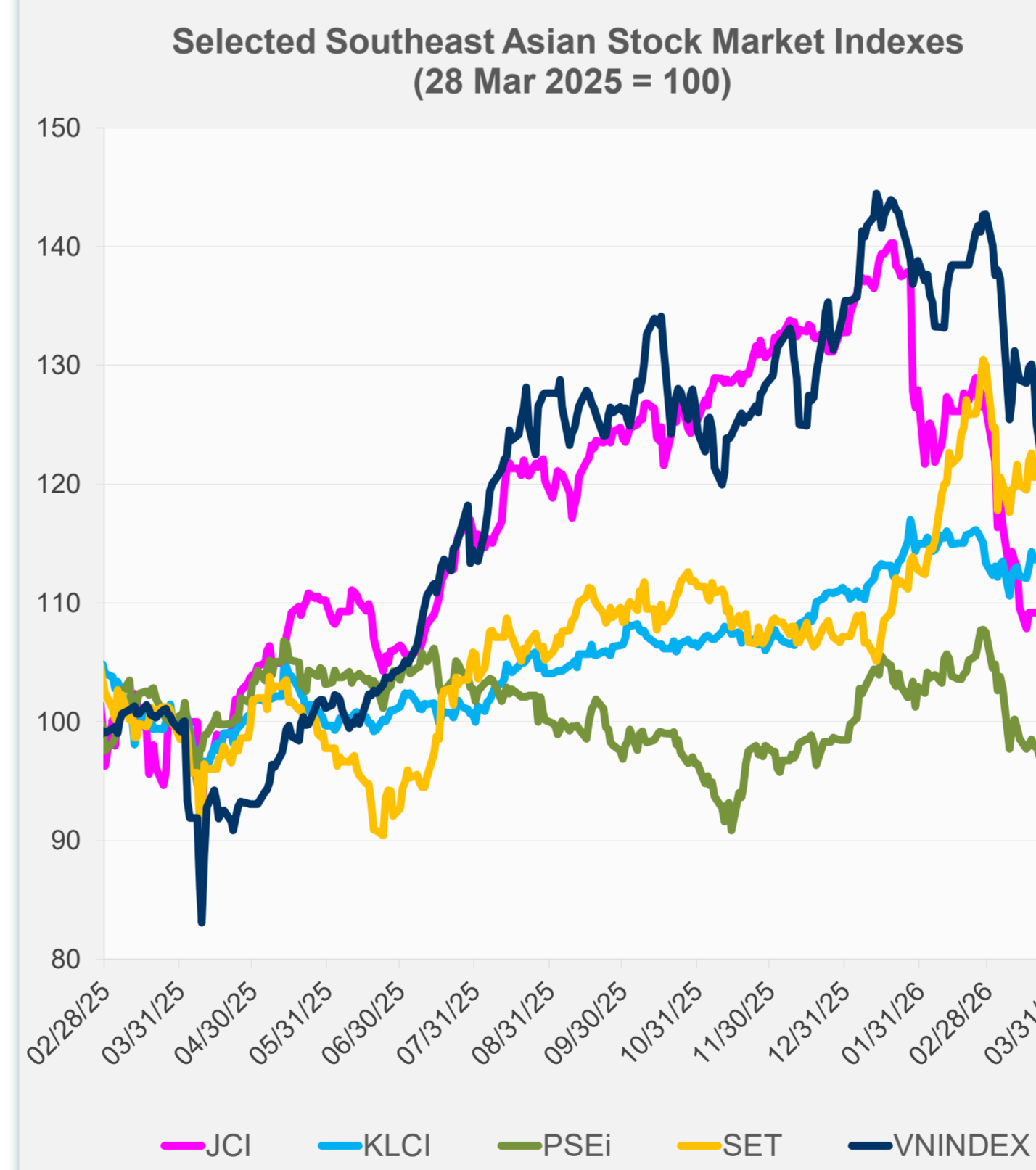
Source: Haver Analytics.

Daily Market Watch STOCK INDEXES

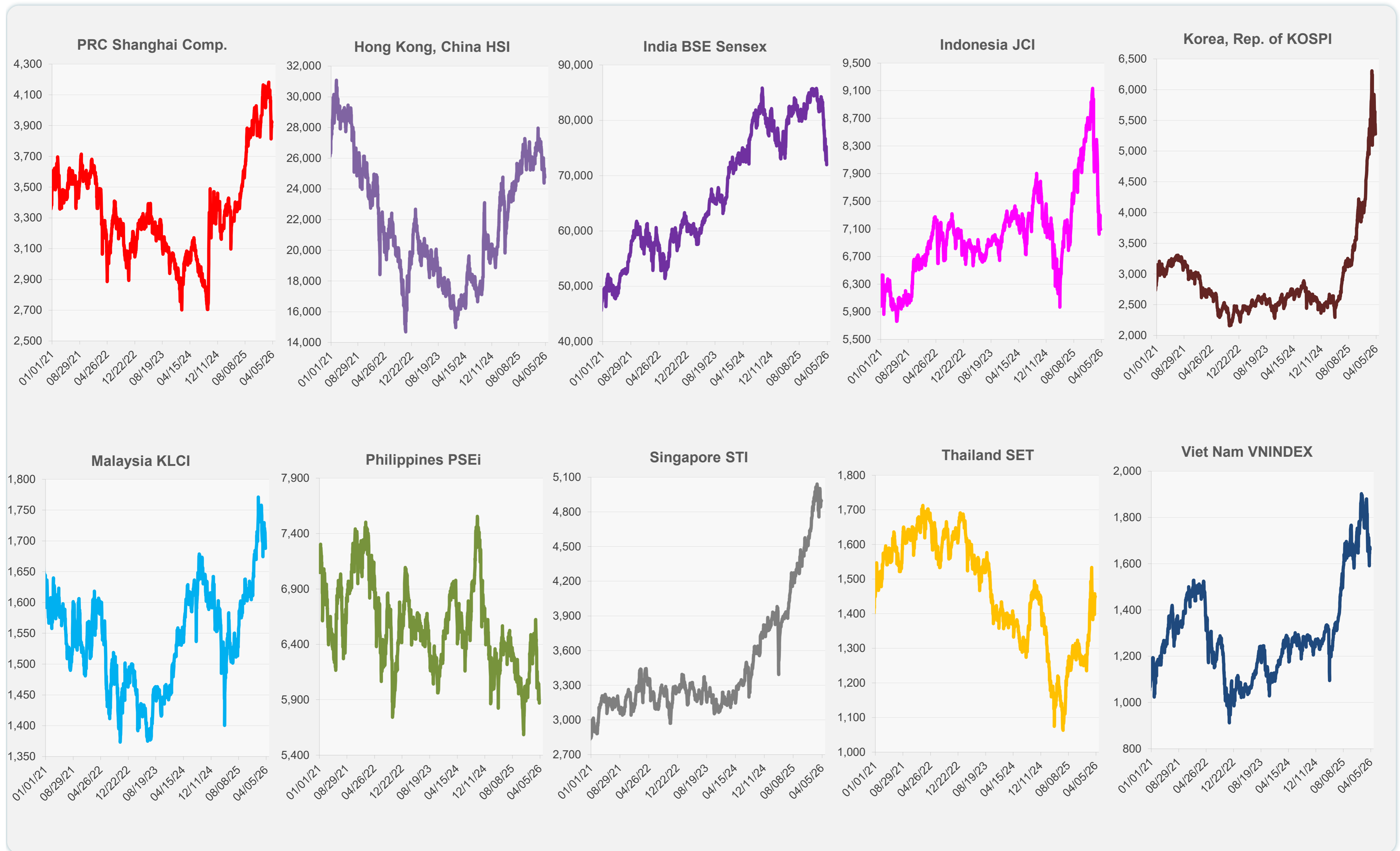
	Latest Closing	% change from Previous Day	% change from 01-Jan-25
US Dow Jones Ind Avg	45,216.14	0.11	6.28
US NASDAQ	20,794.64	-0.73	7.68
US S&P 500	6,343.72	-0.39	7.86
UK FTSE 100	12,626.35	-0.57	54.49
EURO STOXX 50	5,541.79	0.65	13.19
Japan NIKKEI 225	51,885.85	-2.79	30.06
Bangladesh DSEX	5,230.77	-1.61	0.24
PRC Shanghai Comp.	3,923.29	0.24	17.05
Hong Kong, China HSI	24,750.79	-0.81	23.38
India BSE Sensex	71,947.55	-2.22	-8.36
Indonesia JCI	7,091.67	-0.08	0.17
Korea, Rep. of KOSPI	5,277.30	-2.97	119.93
Malaysia KLCI	1,687.90	-1.45	2.77
Pakistan KSE 100	146,890.50	-3.22	25.54
Philippines PSEi	5,869.49	-1.73	-10.10
Singapore STI	4,897.26	-0.02	29.30
Sri Lanka CSEALL	21,092.24	-1.33	32.28
Taipei, China TWSE	32,518.16	-1.80	41.17
Thailand SET	1,449.62	0.18	3.53
Viet Nam VNINDEX	1,662.54	-0.61	31.24



NIE = Newly Industrialized Economies



Sources: ADB calculations using data from Bloomberg and CEIC Data Company.

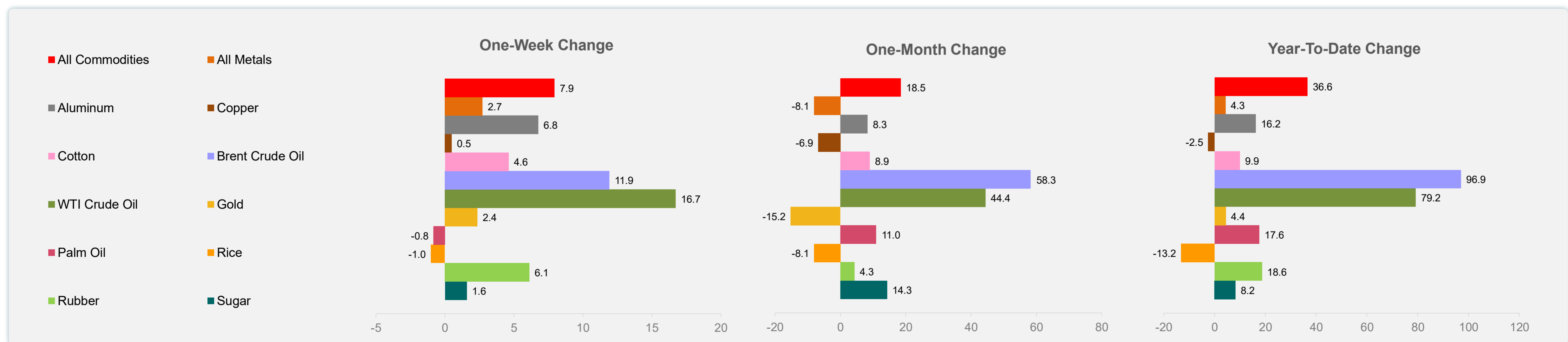
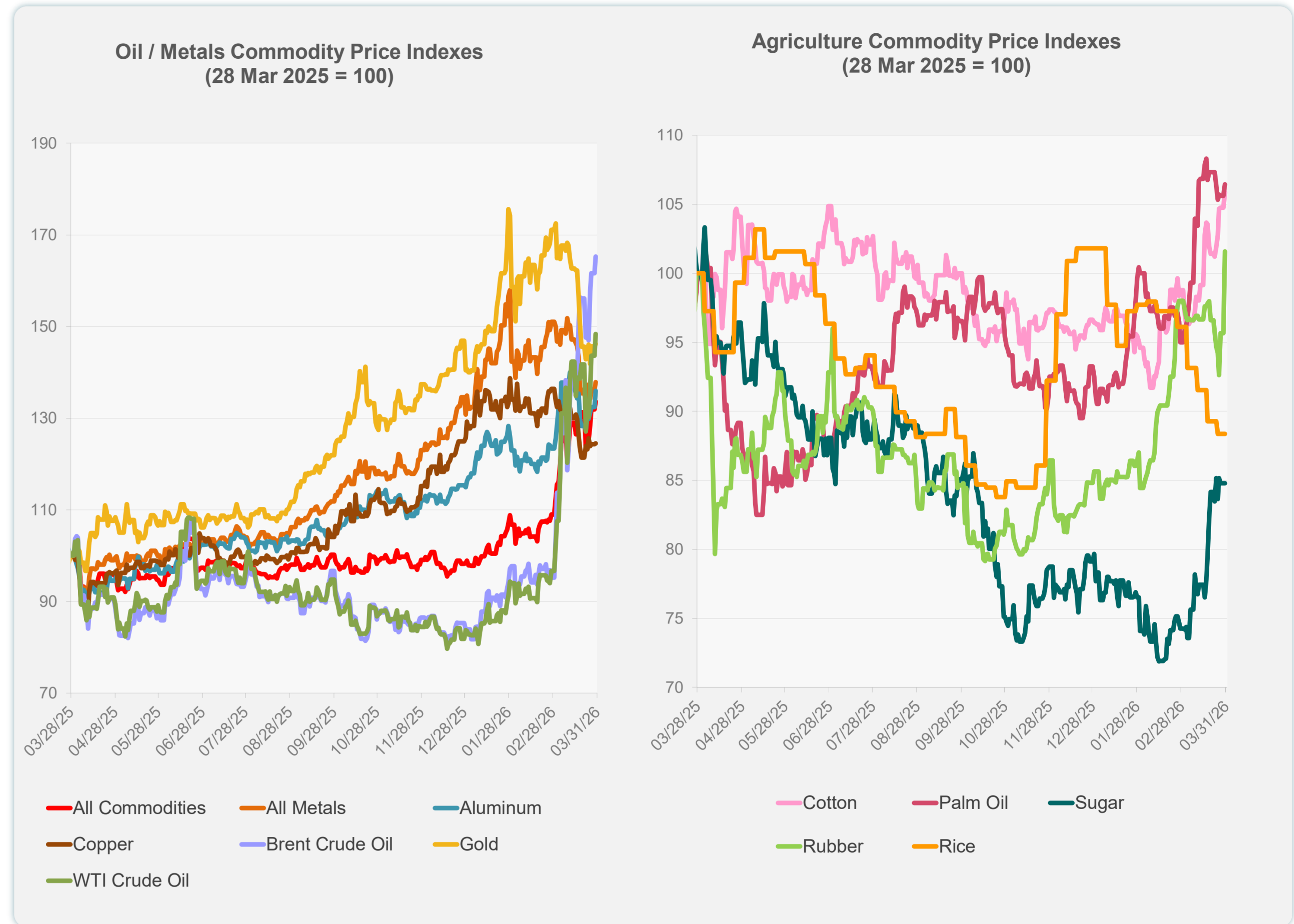


Sources: ADB calculations using data from Bloomberg and CEIC Data Company.

Daily Market Watch
COMMODITY PRICES

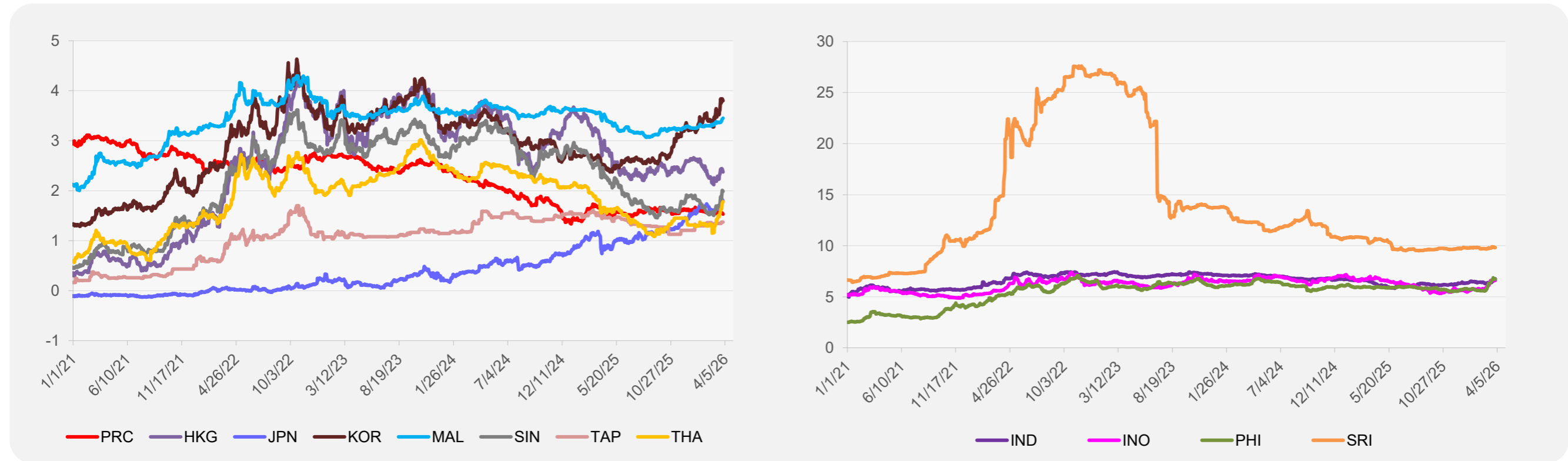
	Unit	Latest Closing	% change from Previous Day	% change from 01-Jan-26
S&P All Commodities	US\$	749.15	1.34	36.58
S&P All Metals	US\$	462.96	1.20	4.33
Aluminum	US\$/metric ton	3,448.21	2.71	16.18
Copper	US\$/metric ton	12,140.95	0.14	-2.51
Cotton	US cents/lb	68.19	1.08	9.95
Brent Crude Oil	US\$/barrel	122.98	2.22	96.94
WTI Crude Oil	US\$/barrel	102.88	3.25	79.17
Gold	US\$/troy oz	4,510.92	0.37	4.43
Palm Oil	US\$/metric tonne	1,138.68	0.77	17.55
Rice ¹	US\$/metric ton	387.00	0.00	-13.23
Rubber ²	US\$/kg	255.00	6.21	18.60
Sugar	US cents/lb	16.01	0.00	8.25

¹ Latest closing price from 25 March 2025.
² Singapore Exchange, Ribbed Smoked Sheet Rubber.

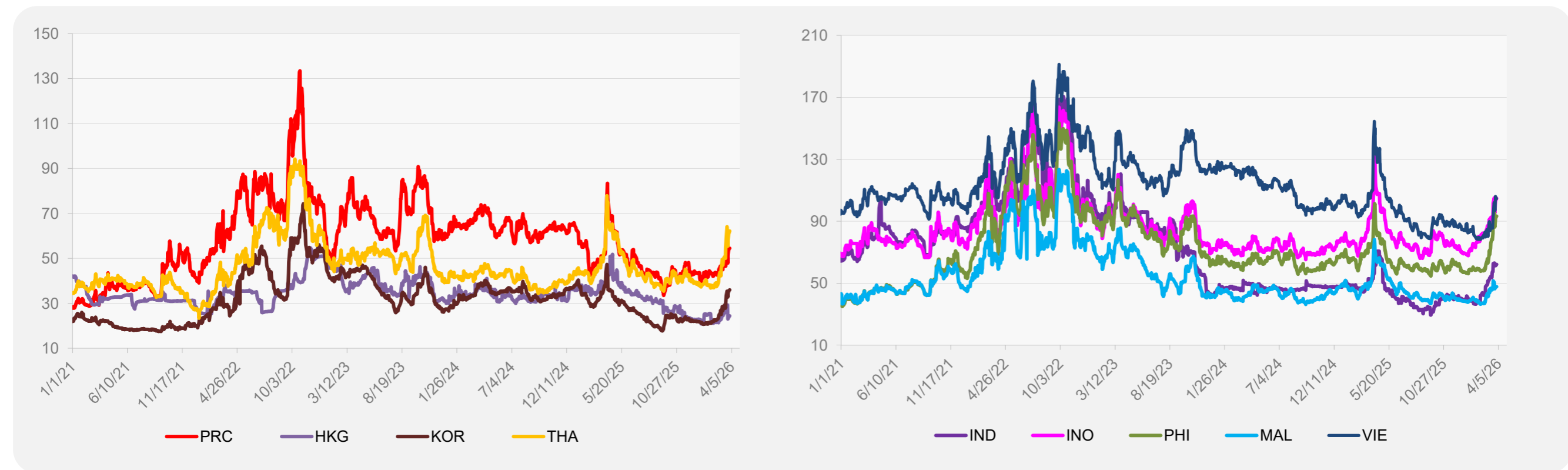


Source: ADB calculations using data from Bloomberg.

5-YEAR LOCAL CURRENCY GOVERNMENT BOND YIELDS (%)



5-YEAR CREDIT DEFAULT SWAP¹



¹ In USD and based on sovereign bonds.
Source: ADB calculations using data from Bloomberg.